

Crop and Related Prices					Oilseeds & Other Prices				
Commodity	Month	This week	Last week	Year ago	Commodity	Month	This week	Last week	16-Dec-16 Year ago
SRW Wheat	Mar	150.37	152.95	178.85	Soybeans	Jan	380.94	381.22	327.85
HRW Wheat	Mar	152.40	151.94	177.20	Soya Meal	Jan	287.66	289.20	254.91
HRS Wheat	Mar	199.98	197.04	186.02	Soya Oil	Jan	810.01	814.42	673.09
CWRS Wheat	Spot	240.79	237.76	241.2	Canola	Jan	518.30	518.80	474.80
CPS Wheat	Spot	172.32	167.40	208.63	Crude Oil(WTI)	Jan	51.93	51.44	36.03
Corn	Mar	140.25	141.53	147.43	Dollar Index	Mar	102.86	101.57	98.81
Ethanol	Mar	40.76	42.03	37.04	DJIA Mini-sized	Mar	19,787	19,698	17,132
Oats	Mar	145.25	145.89	146.71					

For price specs. go to: www.open-i.ca/PriceSpec.htm Data in red are 12-month highs, in blue are 12-month lows

COMMENT: Concern over the potential for damage to US winter wheat crops from continuing cold weather continues to be cited as supportive of prices but the strength of the US dollar probably offsets that. Improving prospects for South American corn crops weighed on prices but higher crude oil prices and export sales reports were supportive. Soybean prices continue to be subject to the opposing forces of good export demand and the prospect of large South American crops.

NEWS: With the arrival of unseasonably cold weather in early December, generally about 5 to 10°C below long term averages, the movement of Prairie crops slowed appreciably. Primary elevator shipments, producer car loadings and processed product shipment were all lower starting the week ending December 11. Total shipments of crops and products that week dipped below a million tonnes for the first time since before harvest. At 0.994M tonnes they were about 15 percent below the average of the previous four weeks. Exports were also lower possibly as a result of this slower movement.

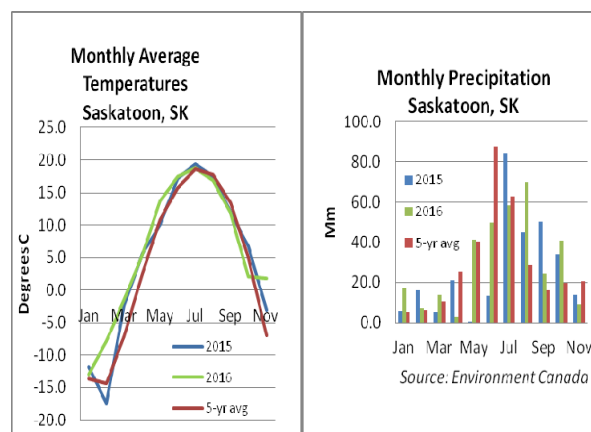
US outstanding export sales and cumulative exports for the three major grains are running ahead of year ago levels. Outstanding sales of wheat, corn and soybeans at the week ending Dec 8 stand at 6.4M, 19.2M and 17.3M tonnes, respectively 42, 74 and 40 percent above year ago levels. Cumulative US exports of wheat, corn and soybeans to the week ending Dec 8 total at 13.4M, 13.9M and 27.8M tonnes, respectively 29, 82 and 24 percent ahead of last year's pace. In its December World Agricultural Supply and Demand Estimates last week the USDA cautioned : *Although early-season soybean exports are sharply higher than a year ago, competition from South America is expected to be strong in the second half of the marketing year, limiting U.S. export prospects during the summer of 2017 relative to the prior year.*

The same may hold for US corn and, with a record Australian wheat crop, for wheat.

OPINION: If the relatively central location of Saskatoon makes its weather any way typical of the Prairies as a whole, it helps explain the 2016 crop experience.

It was a warm and dry spring which allowed earlier than usual seeding, but typical rainfall patterns return for May through to July. August was wet too. The result of this was late but very promising crops. September was fine, but with a wet October with snow a late harvest was further stalled in the western Prairies. Things might have been worse as November was relatively warm and dry. Salvaging of some crops will have to wait until the spring but much less than might have been anticipated in October. Lots of harvested crops will need drying but the damage is probably less than a very early frost would have caused.

David Walker, Edmonton, AB, CA



While every reasonable effort is made to ensure this information is accurate, the author is unable to provide any guarantee over accuracy, or to be liable for the consequences of action taken on the basis of any information which proves to be inaccurate.